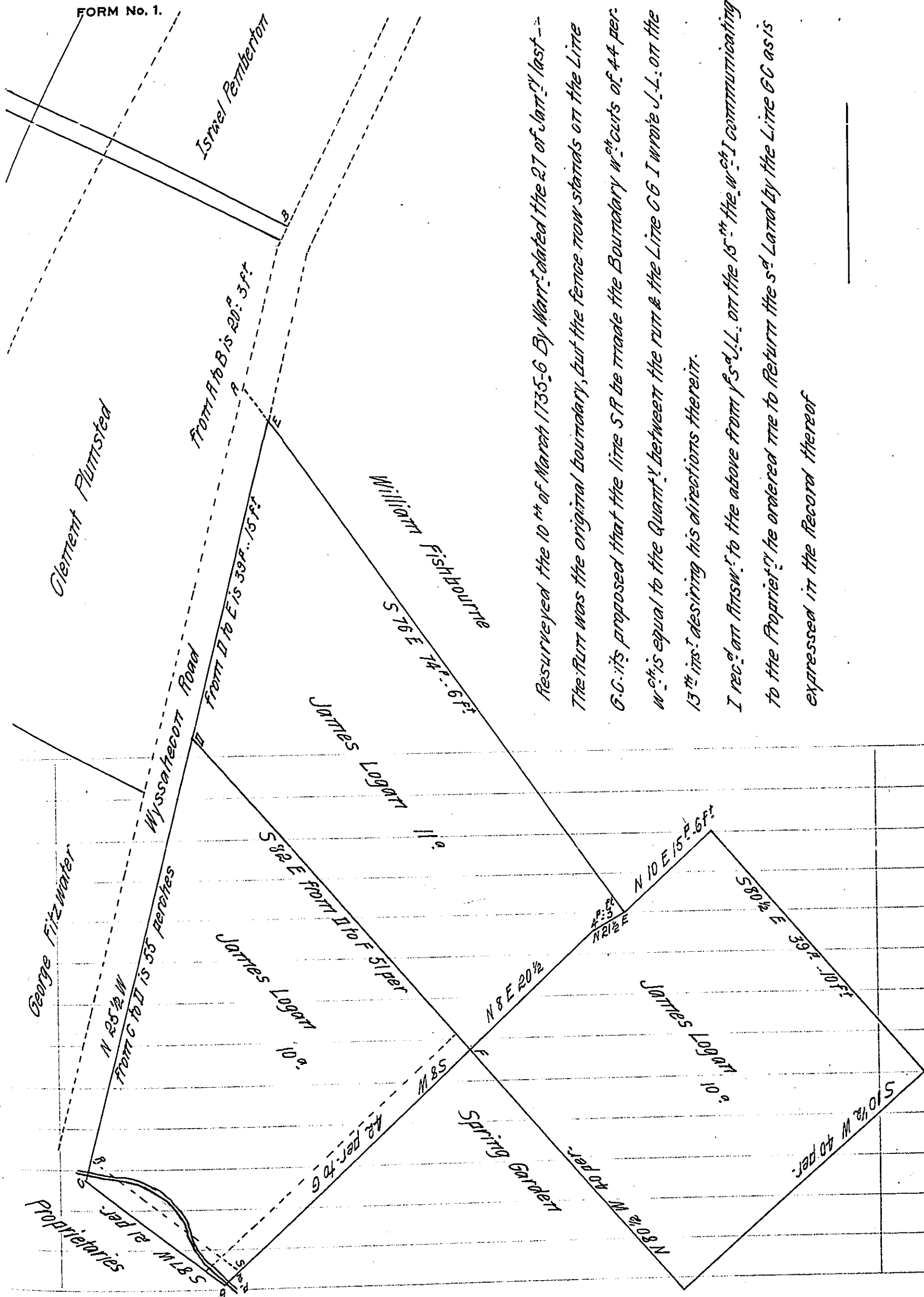


FORM No. 1.



Resurveyed the 10th of March 1735-6 By Warr: dated the 27 of Jan^y last --
 The Plutt was the original boundary, but the fence now stands on the Line
 G.C. it's proposed that the line S.F. be made the Boundary w^{ch} cuts of 44 per.
 w^{ch} is equal to the Quant^y between the run & the Line G.C. I wrote J.L. on the
 13th inst. desiring his directions therein.
 I rec^d on Answ^r to the above from J^s J.L. on the 15th the w^{ch} I communicating
 to the Propriet^y he ordered me to Return the s^d Land by the Line G.C. as is
 expressed in the Record thereof

IN TESTIMONY that the above is a copy of the original remaining on file in
 the Department of Internal Affairs of Pennsylvania, made
 conformably to an Act of Assembly approved the 16th day of
 February, 1833, I have hereunto set my Hand and caused
 the Seal of said Department to be affixed at Harrisburg,
 this twenty first day of September 1910

Henry Houch
 Secretary of Internal Affairs.